

# *Asymmetric Labor Market Effects of the 2008-9 Crisis*

---

**Prof. Seyfettin Gürsel**

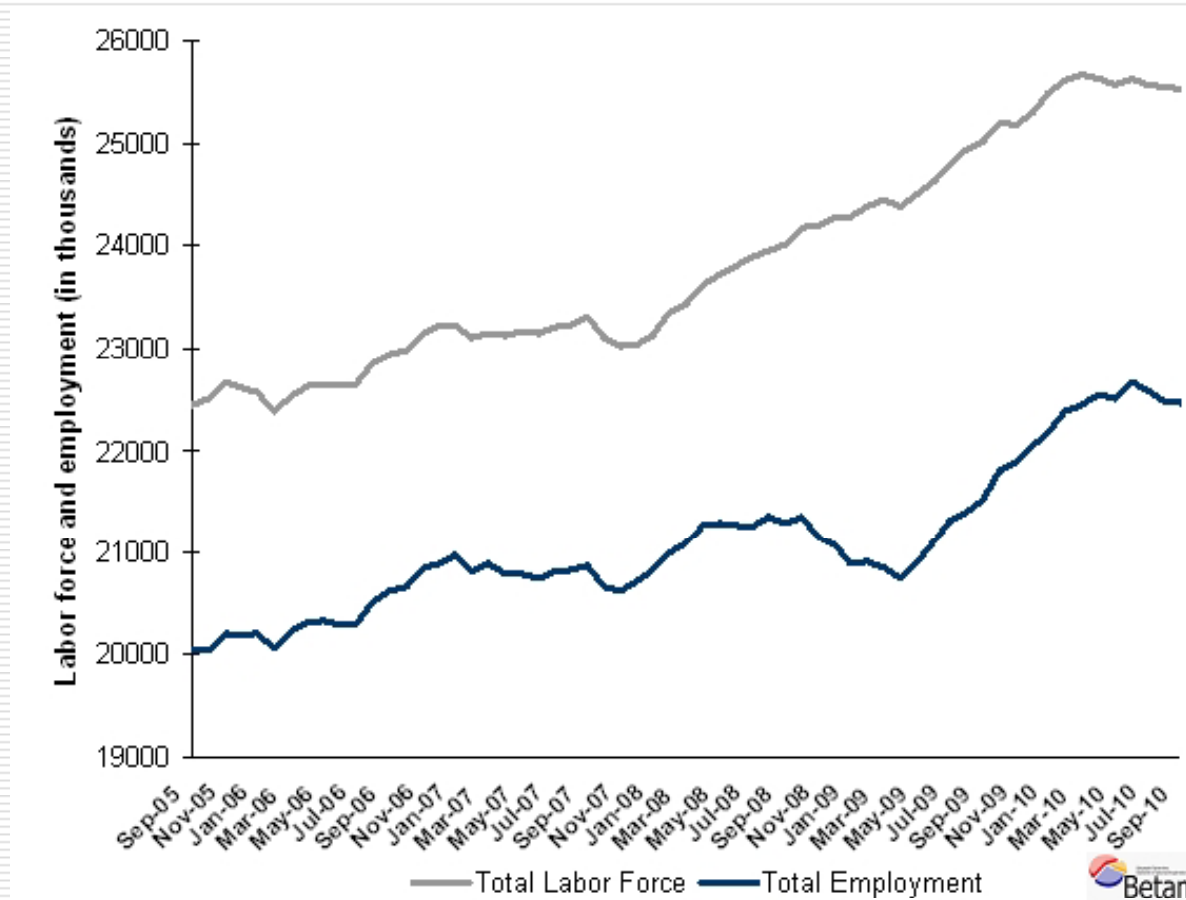
Director

**Assist. Prof. Gökçe Uysal-Kolaşın**

Vice Director

Bahçeşehir University Center for Economic and Social Research (Betam)

## Employment and Labor Force (Seasonally adjusted)

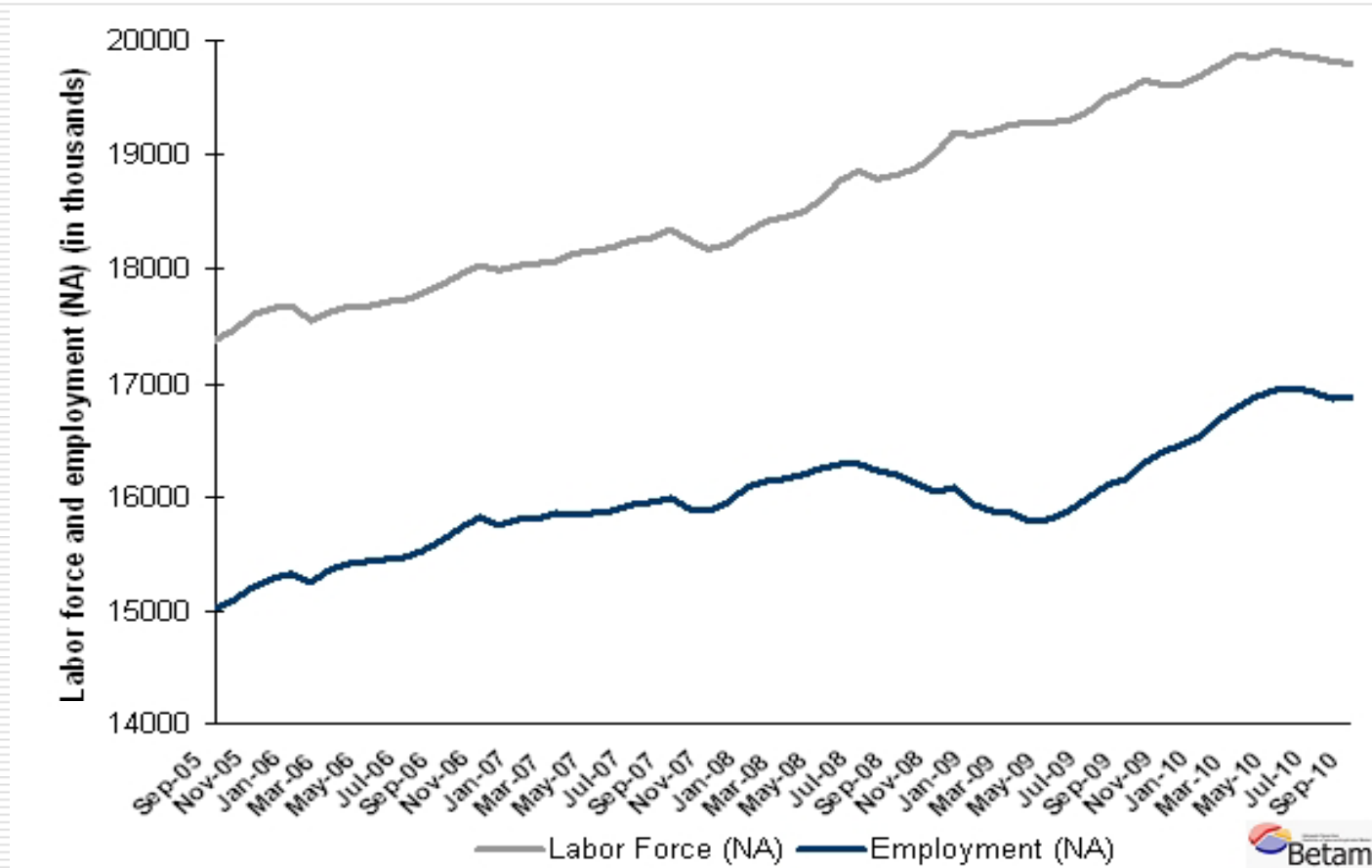


# Unemployment

Seasonally adjusted unemployment rate and total number of unemployed



## Non-Agricultural Employment and Labor Force (Seasonally adjusted)

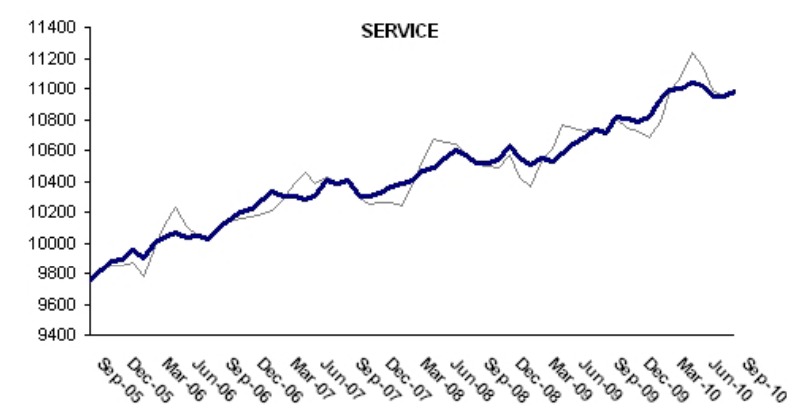
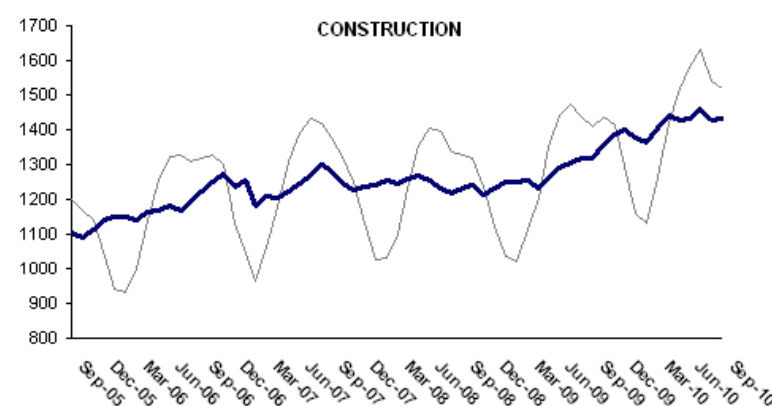
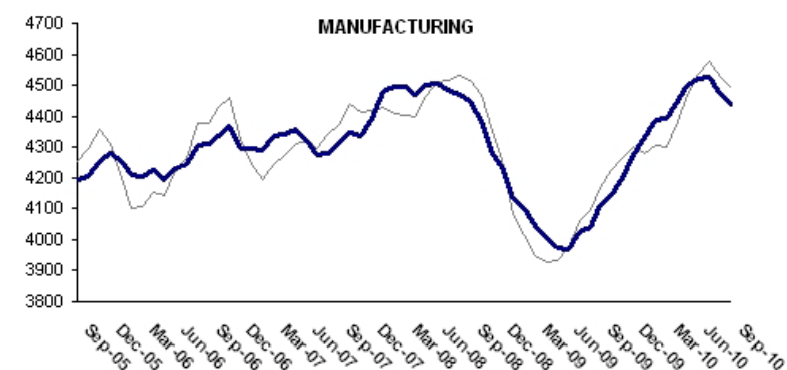
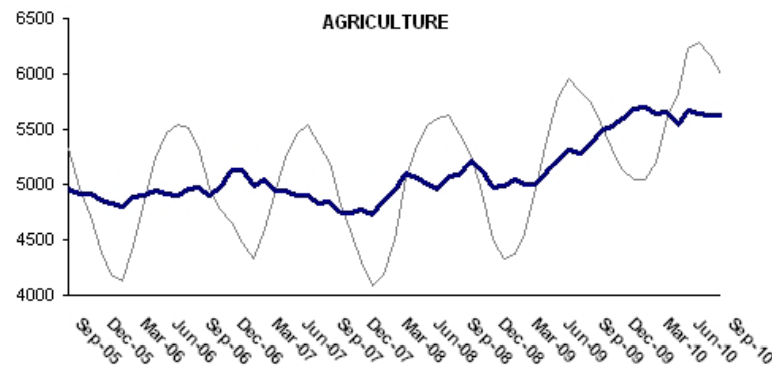


# Non-Agricultural Unemployment

Seasonally adjusted NA unemployment rate and number of unemployed



# Sectoral Change in Employment

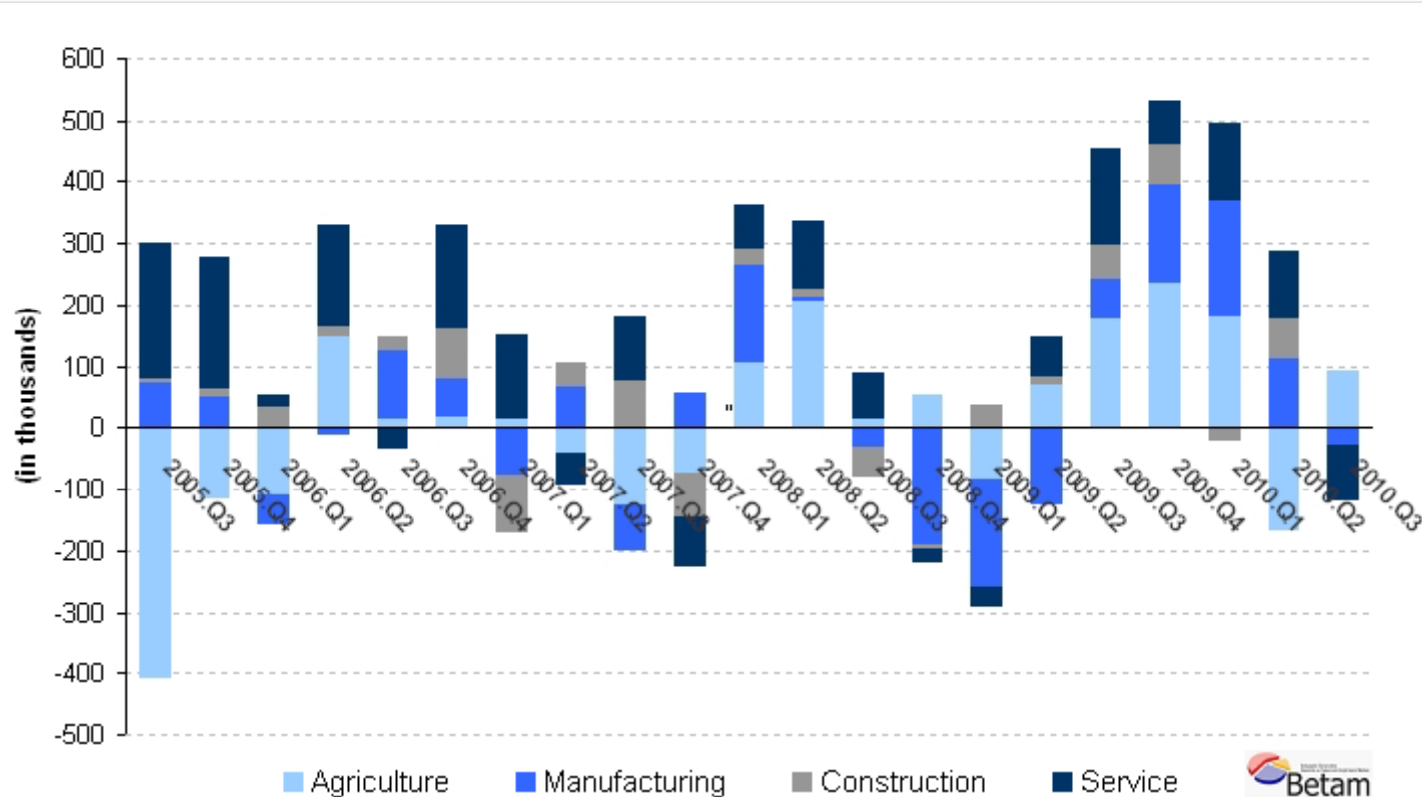


Grey line: raw series

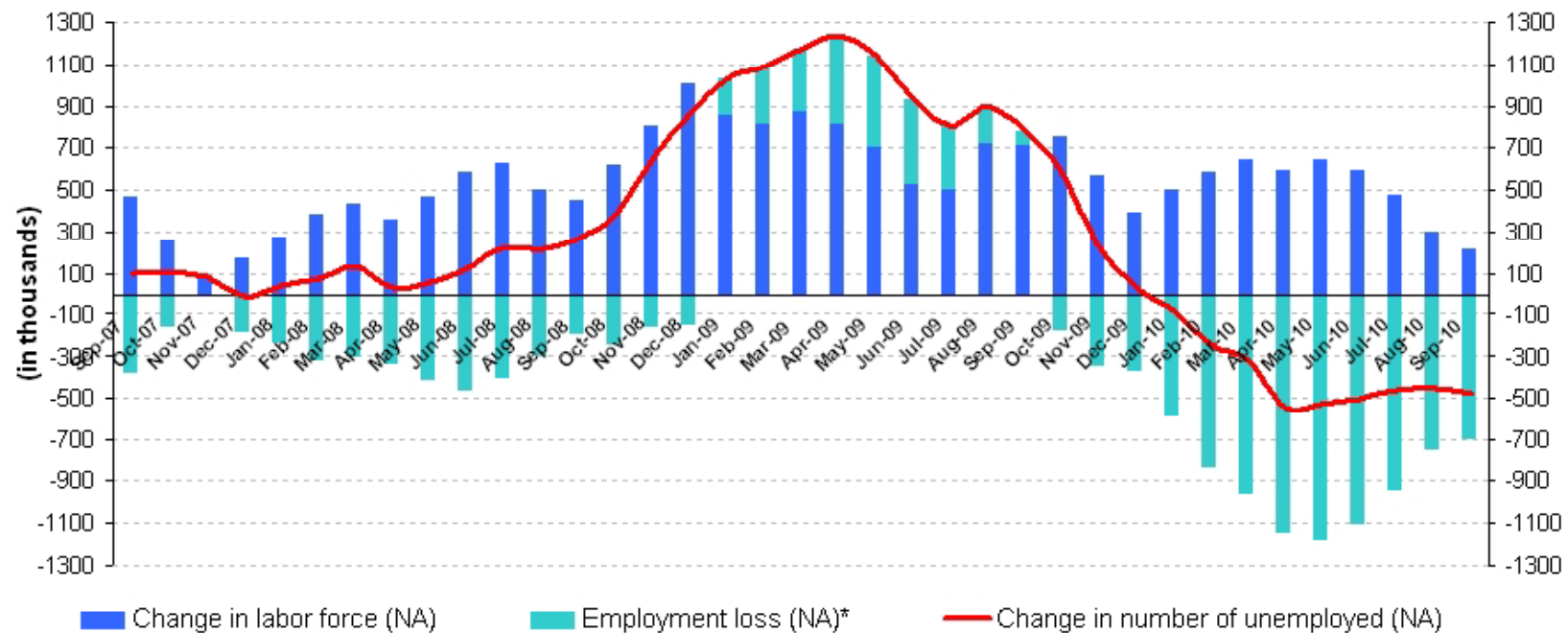
Blue line: Seasonally adjusted series

# Decompositon of Employment Change

Seasonally Adjusted QoQ



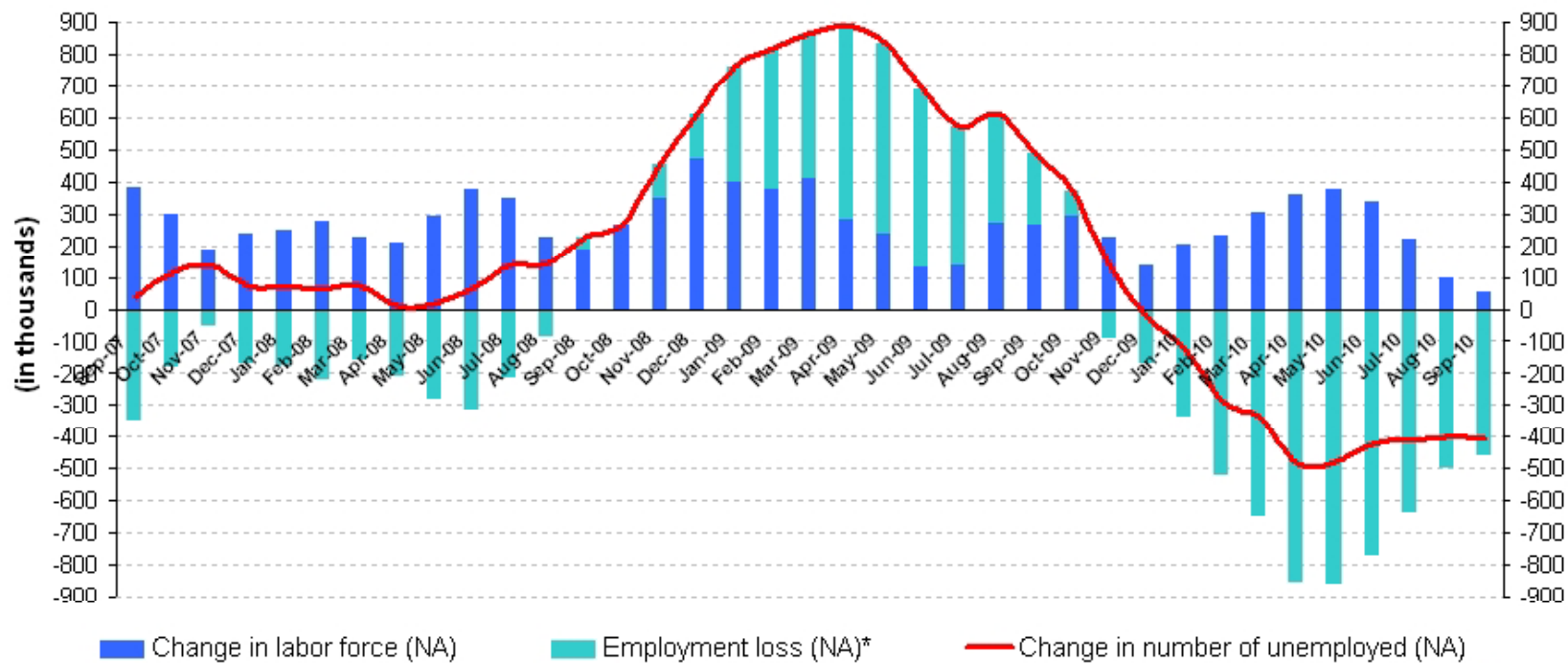
## Decomposition of unemployment (YoY change)



\* Positive values of employment loss indicates a decrease in non-agricultural employment, vice versa.

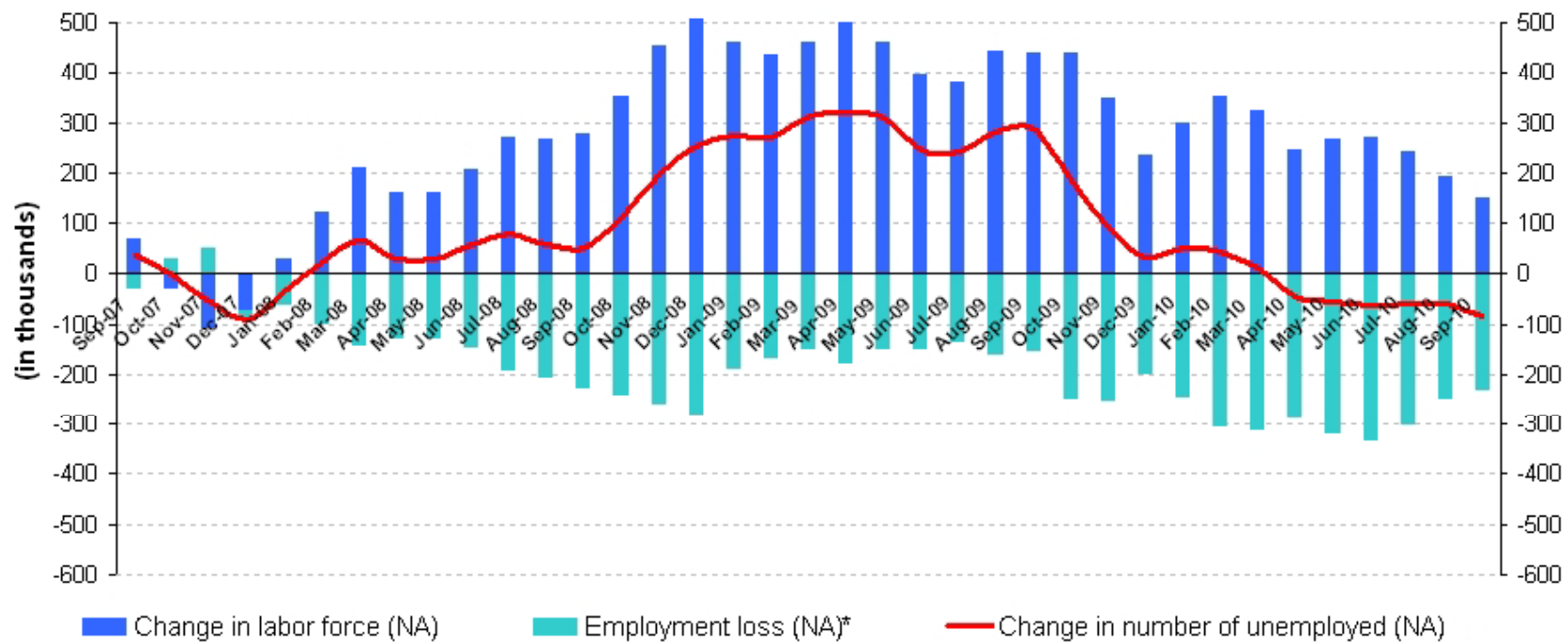


## Decomposition of unemployment - **Male** (YoY change)



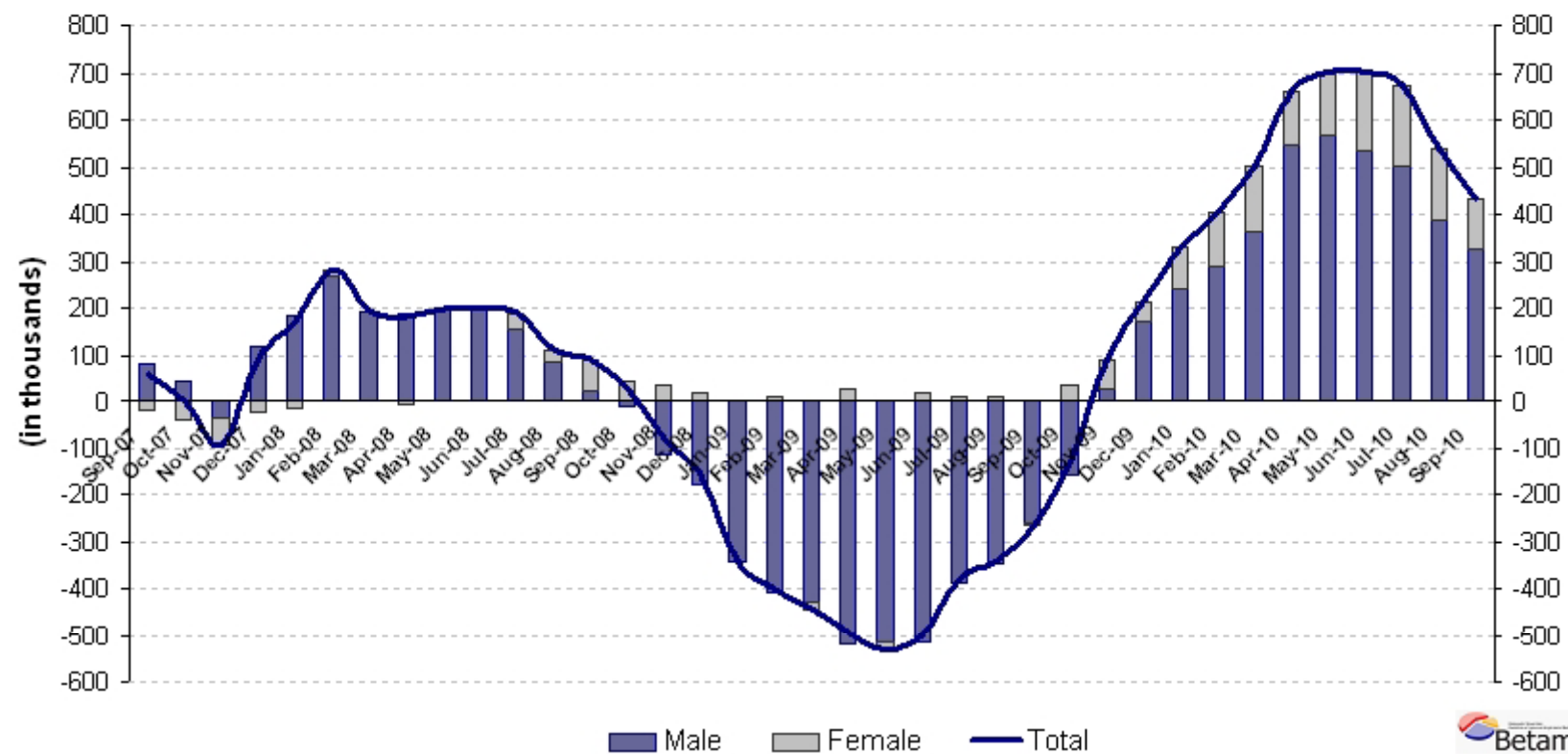
\* Positive values of employment loss indicates a decrease in non-agricultural employment, vice versa.

## Decomposition of unemployment - **Female** (YoY change)

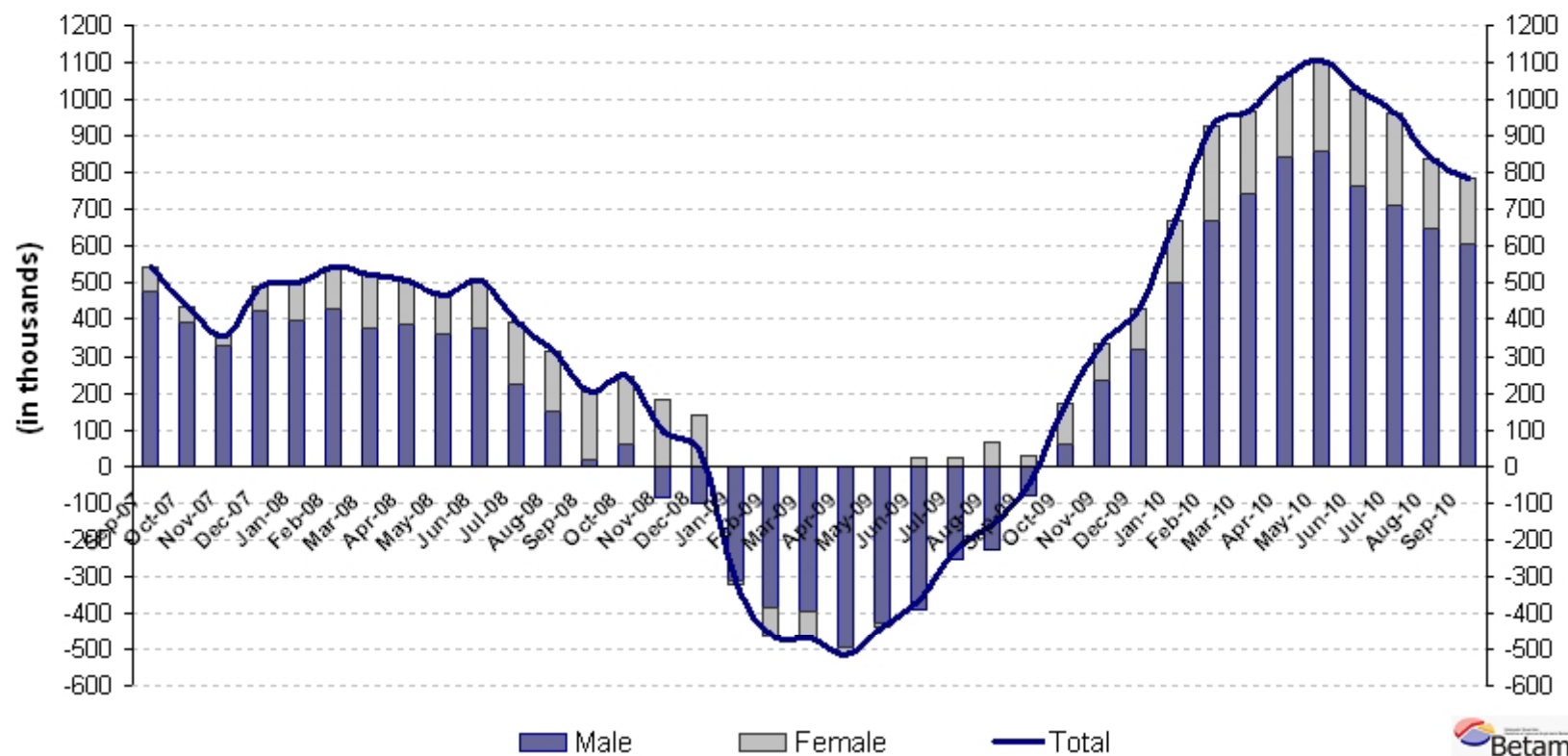


\* Positive values of employment loss indicates a decrease in non-agricultural employment, vice versa.

## Employment in Manufacturing Sector (YoY change)



## Regular/casual Wage Earners in NA Sectors (YoY change)



## Difference in Differences – Calculation Methodology

---

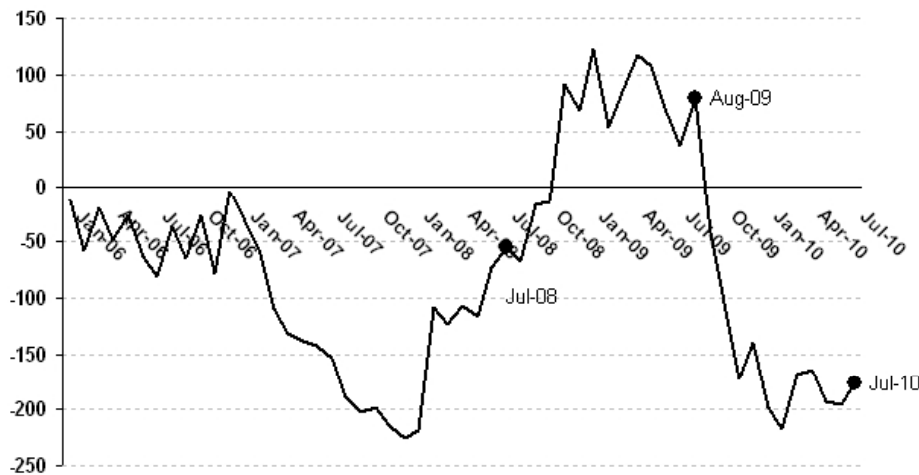
Difference in difference

$$= (\text{Female emp. aged over 30 } (t+1) - \text{Female emp. aged over 30 } (t)) \\ - (\text{Male emp. aged over 30 } (t+1) - \text{Male emp. aged over 30 } (t))$$

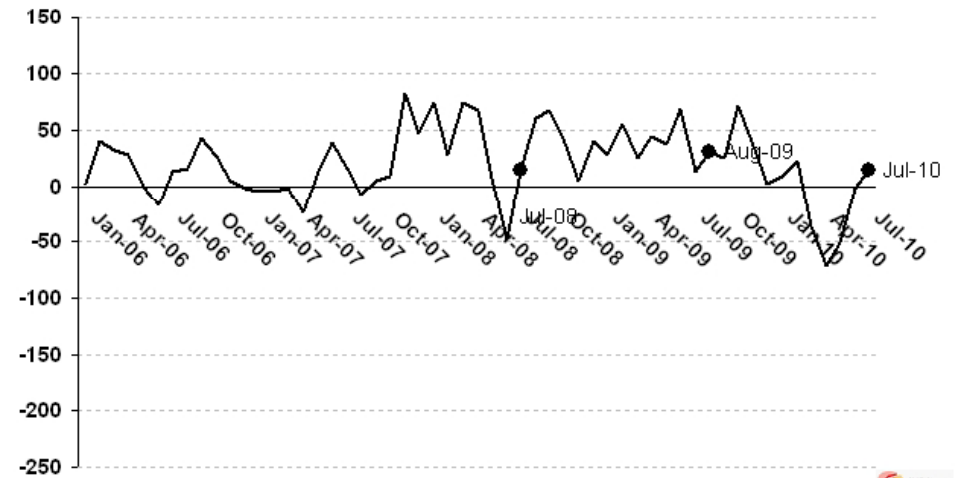
# Difference in Differences

Difference in formal and informal employment changes (NA)

FORMAL



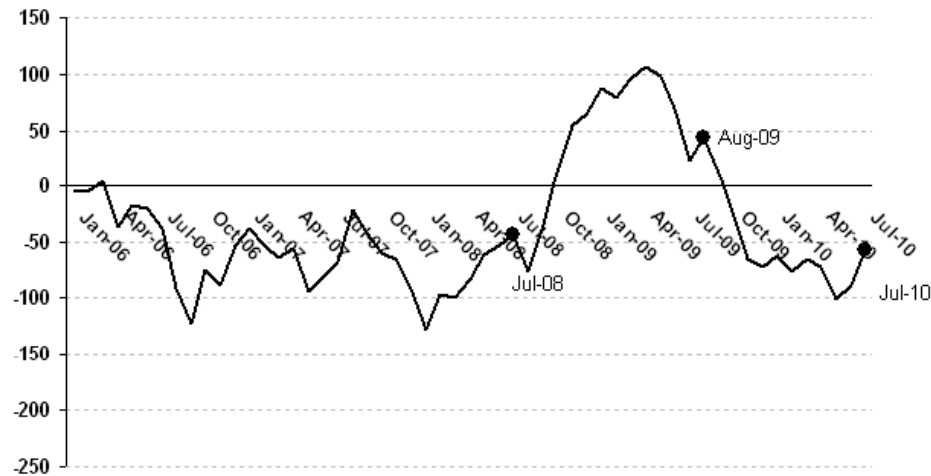
INFORMAL



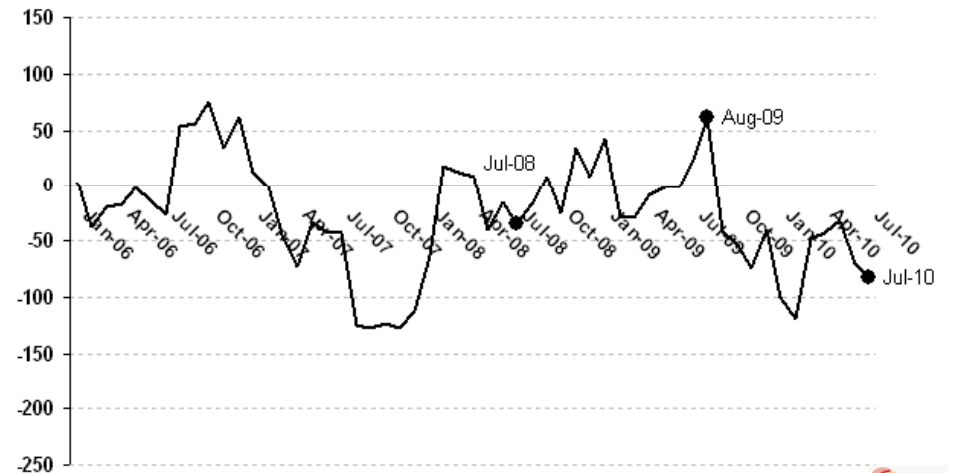
# Diff in Diff – Industry of employment

Difference in formal employment changes (in thousands)

MANUFACTURING

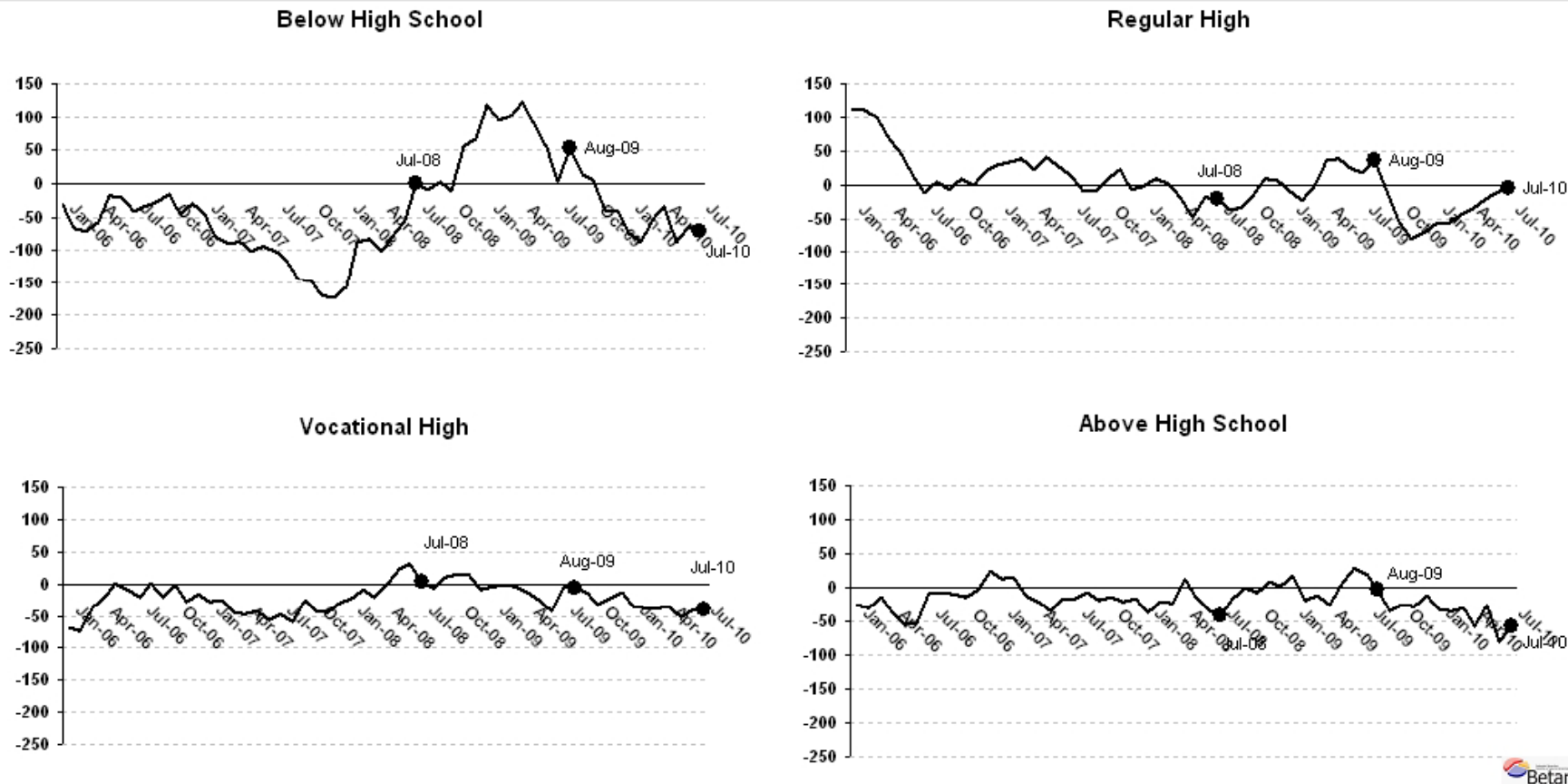


SERVICE



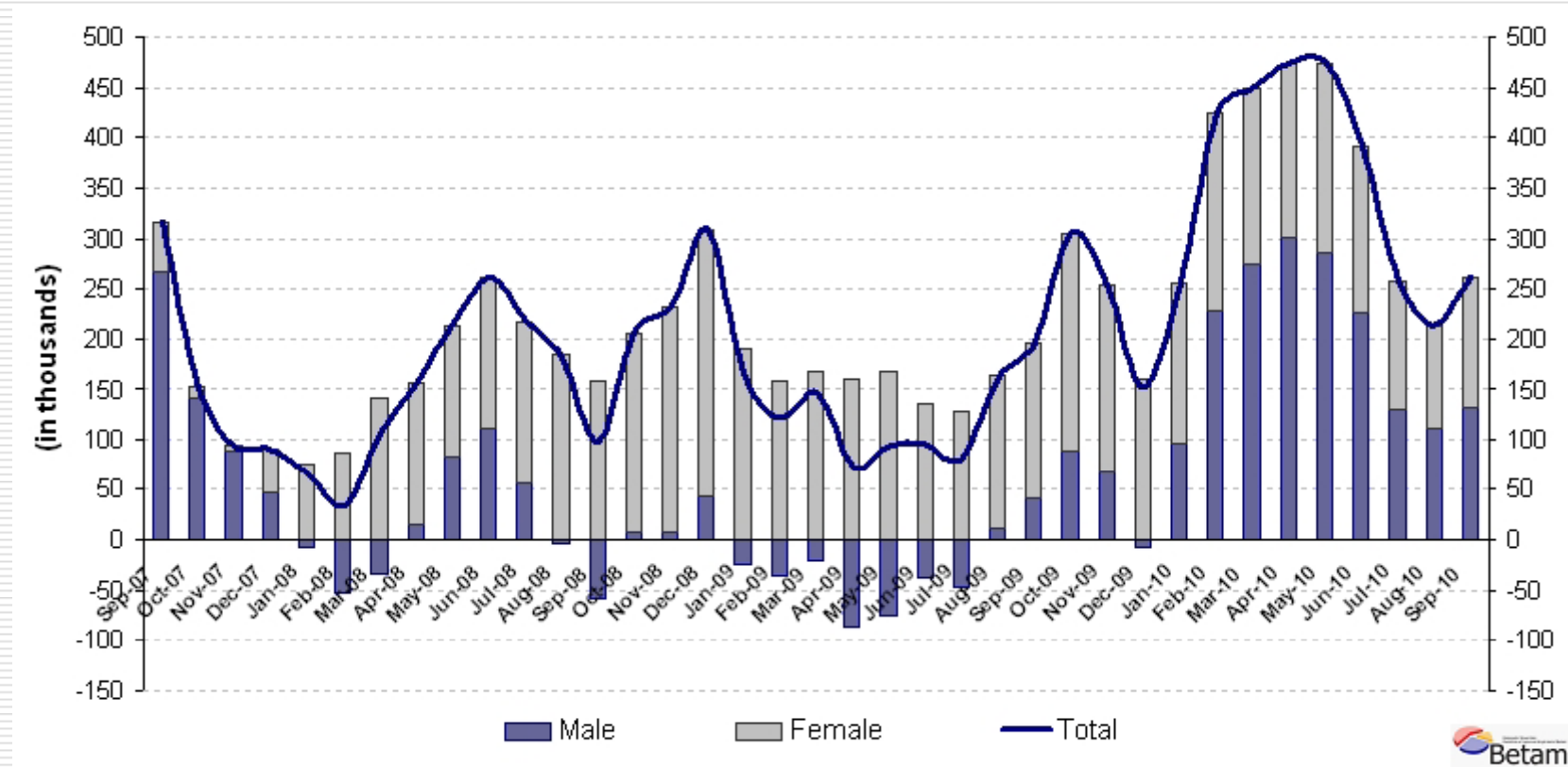
# Diff in Diff – Education

Difference in formal employment changes (in thousands)

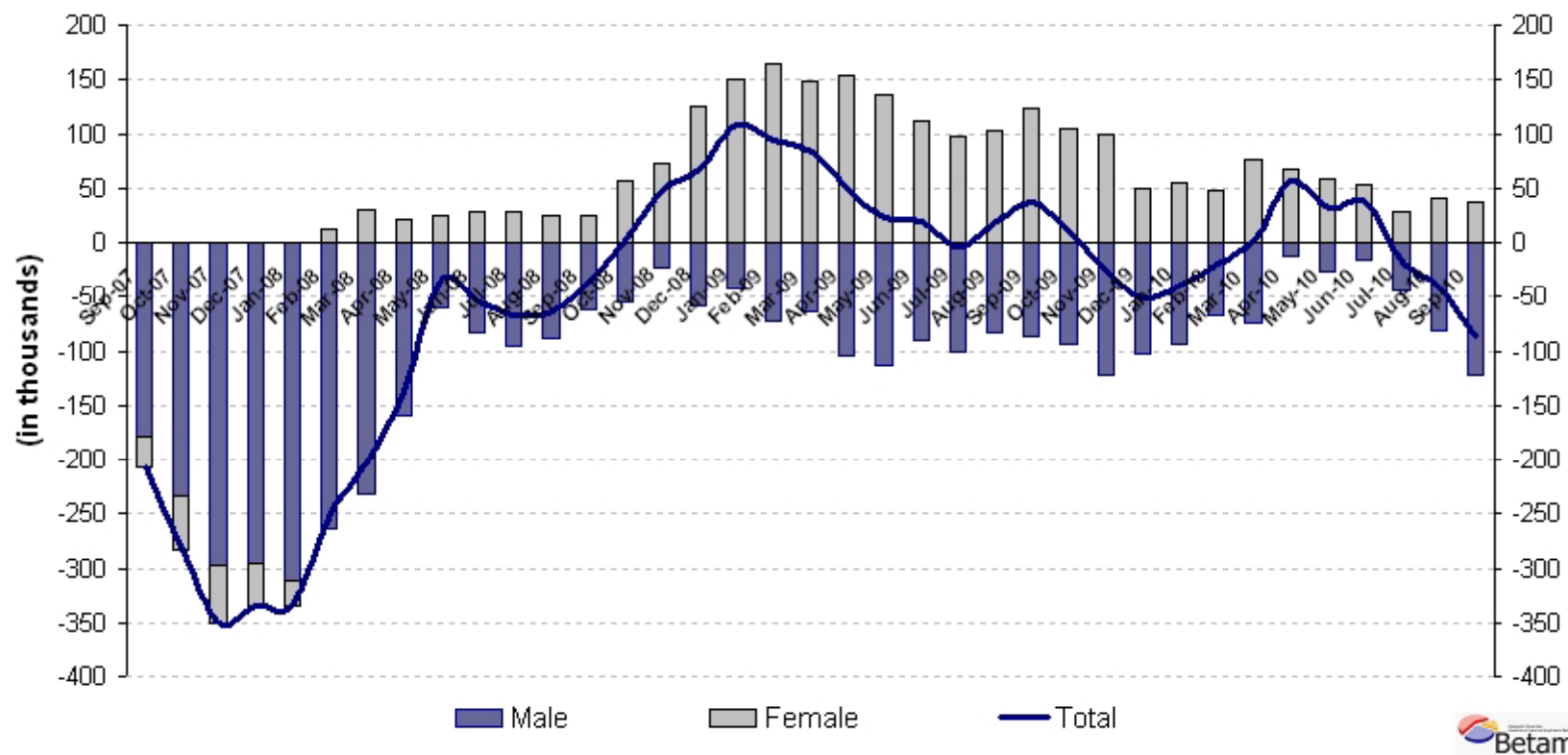




## Employment in Service Sector (YoY change)



## Own Account Workers in NA Sectors (YoY change)



## Employment and Growth

---

### Quarterly average growth rates

	NA Labor Force	NA Employment
2005.Q1-2008.Q2	% 0,8	% 0,9
2008.Q2-2009.Q2	% 0,9	% -0,7
2009.Q2-2010.Q3	% 0,6	% 1,3

### Annual average growth rates

	NA Labor Force	NA Employment
2005.Q1-2008.Q2	% 3,2	% 3,6
2008.Q2-2009.Q2	% 3,6	% - 2,8
2009.Q2-2010.Q3	% 2,4	% 5,2

# THANK YOU

---